



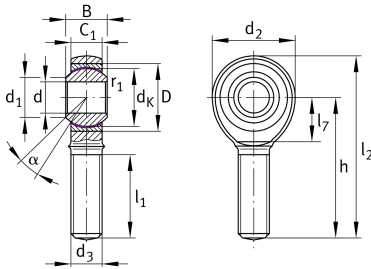
GAKL20-PW

Rod end

Schaeffler ID:
0066309440000

Rod end GAKL...-PW, external threads,
maintenance-free

Technical information



Main Dimensions & Performance Data

d	20 mm	Bore diameter bearing
d ₂	50 mm	Outer eye diameter
D	40 mm	Outside diameter bearing
l ₂	103 mm	Total length external thread rod
B	25 mm	Width inner ring
C _r	56,600 N	Basic dynamic load rating, radial
C _{0r}	45,600 N	Basic static load rating, radial
	0.376 kg	Weight

Dimensions

d _k	34.925 mm	Ball diameter
d ₁	24.3 mm	Outer flange diameter inner ring
d ₃	M20x1,5	Thread size
h	78 mm	Shank Length External thread rod
C ₁	18 mm	Width of the rod end
α	14 °	Tilt angle
l ₁	45 mm	Thread length external thread
l ₇	26 mm	Distance drilling with/shaft start
G _r	0 - 0,035 mm	Radial Clearance
d _T	H7 mm	Bore diameter bearing, tolerance
d _{OT}	0.021 mm	Bore diameter bearing, upper tolerance
d _{UT}	0 mm	Bore diameter bearing, lower tolerance
B _{OT}	0 mm	Width inner ring, upper tolerance
B _{UT}	-0.12 mm	Width inner ring, lower tolerance

Mounting dimensions

r _{1smin}	0.3 mm	Edge Spacing
--------------------	--------	--------------

Temperature range

T _{min}	-50 °C	Operating temperature min.
T _{max}	200 °C	Operating temperature max.